



Guide to
Field Inventory[®]

WAY,
—————→ *way, way beyond*
“working remotely”

BUSINESS IS ALWAYS ON, ALWAYS MOVING, AND ALWAYS PRESENT – even if you aren't. When one market closes for the day, another opens, and you need your hand in all of them. No matter where you are in the world, you can only make the best decisions with the most up-to-date information. While we can enjoy seamless connectivity from our homes to the office and everywhere in between, it's the rest of the world that tends to be a challenge. Cellular service is where the people are, but what if your business happens elsewhere?

A NEXTWORLD[®] eBOOK



YOU KNOW THAT GOING “INTO THE FIELD” is a completely different approach to “working remotely.” Keeping your team in the field up to date, and keeping the central office flush with new data, depends on how information is collected, synced, and distributed.

This is where Field Inventory® comes into play. Your team can input data in the forms and applications no matter where they are – connected or not - to automatically upload when they are back in the coverage area.



Oil & Gas

SPECULATION IS ALL ABOUT EXPLORATION, and exploring means remote locations, offshore sites, and boldly going where few have traveled before. Companies like TETRA Technologies are under continual pressure to discover and deliver extracted resources in a way that is both safe and cost effective. This means keeping teams up to date and tools moving to the right locations. With Field Inventory, the remote teams kept the centralized software systems up to date from anywhere in the world, and with any device they chose.

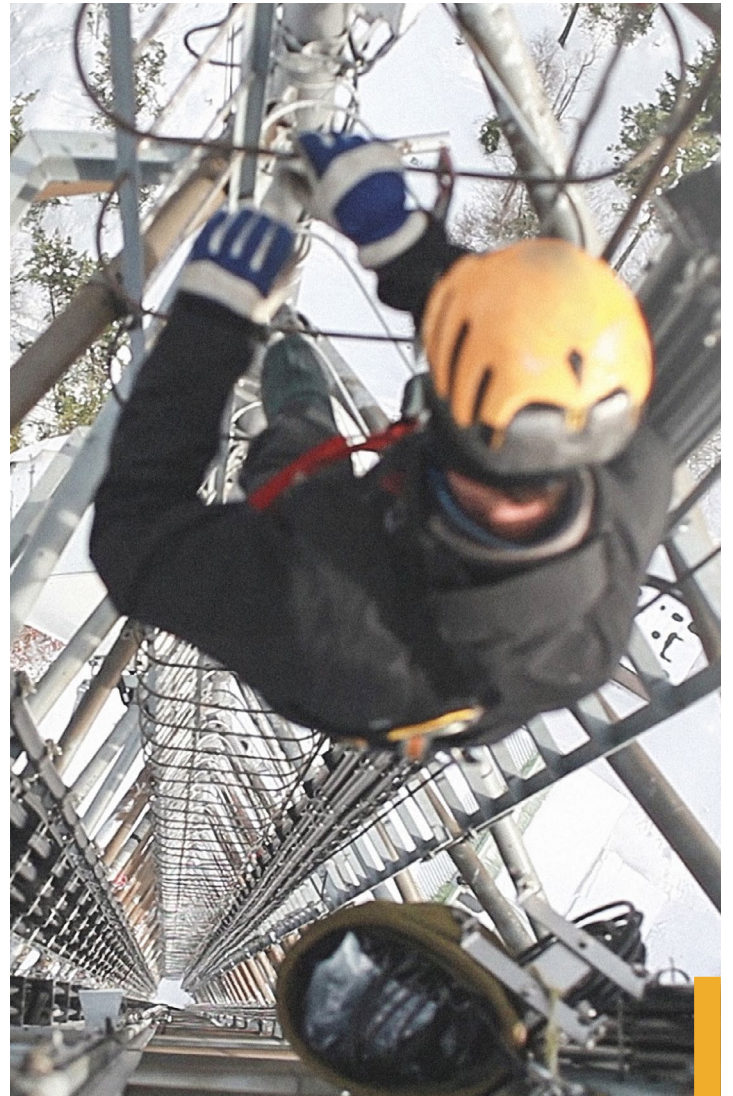


Telecom

SERVICE OUTAGES? That might mean they are down for you, too. Fortunately, you can still access inventory records and update services even while your devices are offline. Establishing a new service area? Field Inventory keeps you connected to the important data even while you're still building the connection. Once the service is going, your records sync so your business keeps moving.

Construction

BUILDING NEW CITIES MEANS GOING TO NEW PLACES, and for your team it means being there first. Before plumbing, before power, before cell towers and wireless connections. Thanks to the cloud connectivity, you can still access records in offline mode, update orders, leave notes, and more. And once you're connected, everything syncs.



Mining

MORE THAN JUST LOSING THE RADIO when driving through a tunnel, you know what it is to be under hundreds of feet of granite miles from anywhere. Even if your signal can get to your outpost, it probably isn't going to follow you underground. Whether you're managing the office or inputting sediment assessments forty feet below, you can rest assured your data stays consistent.



Medical Devices

FOR MEDICAL SUPPLY COMPANIES, it's critical to know the exact Lot, Serial, location, and expiration for every piece of equipment. With inventory stored in operating rooms and the trunks of sales reps, you need a way to know what devices are consumed, and to deliver a full chain of custody for safety, compliance, and better customer service. Field Inventory provides Medical Device companies with increased billing and inventory accuracy with real-time visibility into the state, location, and authenticity of supplies whether they're in a warehouse, a vehicle, or an OR.

The Power of Integrated Field Inventory®

Empower teams and enable cross-functional collaboration with uninterrupted oversight of people, processes, and assets in the field. From the back office to the field and all the steps in between, increase visibility, reduce carrying costs, accelerate inventory turns, and improve productivity.

Field Workers - On The Road

ACCESS REAL-TIME INFORMATION FROM ANYWHERE, CONNECTED OR NOT

Manage and track inventory on the go and in real time. Field operations teams can ensure they have the right tools and inventory to complete a job, minimizing carrying costs and reducing the risk of stockouts. They can also capture data from anywhere, on any device, at the point of activity.



Back Office

ACCELERATE CASH CONVERSION WITH DATA-BACKED DECISION MAKING

Arm finance, operations, and executive teams with a single source of truth for all your inventory data. Custom dashboards give users real-time visibility into job profitability, inventory consumption, asset utilization, job status, and so much more. When the back office can see big-picture trends from the warehouse, on the production line, or out in the field, that data analysis helps them make smarter, faster business decisions.



Warehouse

BOOST EFFICIENCY AND INCREASE INVENTORY OPTIMIZATION

Automate inbound, outbound, and storage processes so you can focus on managing exceptional cases along the way. With continuous visibility and control over inventory movements, warehouse teams spend less time tracking down information and correcting administrative errors.



Field Workers - On A Job Site

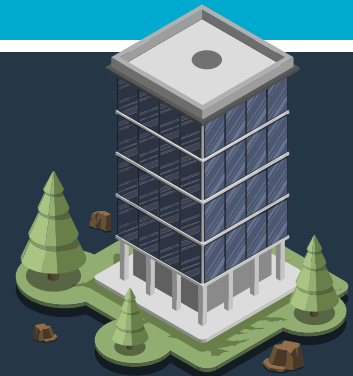
BRIDGE THE GAP BETWEEN ENTERPRISE SYSTEMS AND DAY-TO-DAY OPERATIONS ACTIVITIES

Eliminate paper and Excel-based processes, which are not only inefficient but also prone to error. Connecting the entire business with cloud-based inventory management applications and up-to-date visibility allows field crews to optimize scheduling, enhance resource utilization, and bill in real time.



Customers

Increase customer loyalty and encourage repeat business. Removing silos between the field and the back office not only benefits the members of those teams, but it also makes it easier for end customers to do business with you by increasing the number of projects done on time and in full, and helping your business move faster.



With Field Inventory, your business can gain unprecedented agility and control to evolve your inventory processes and transform your end-to-end supply chain into a truly integrated value chain.

Field Inventory[®] *Empowers* Every Industry

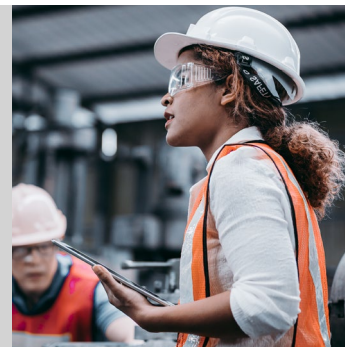


Empowering Your Field Work(ers)

Auto capture. The upside of being offline? No lag-time. Your crew's devices can access records locally stored on their device and swiftly update those records with captured data. From images and UTM coordinates and everything in between, captured quickly so your team can get on to the next job.

Dispatch

Field data used to come in through reception where it was then processed by file clerks before it was added to the correlated file. Now, all of that happens the moment your team is connected to your network. Within a moment, your dispatcher has up-to-date information in front of them so they can keep your projects moving.



Field Inventory[®] Empowers Every Industry (cont.)



Seamless Data Flow = Seamless Cashflow

In a competitive environment like oil and gas, TETRA's bottom line depends on their ability to quickly make the right decision. This means having the right data available to everyone in the team, no matter where they are located. Field Inventory shares information about the availability of every truck, machine, and tool in every warehouse or remote work camp. Logistics is no longer a challenge, resources aren't lost in the mix, and every team has what they need to work efficiently and effectively.

Continuity

Automatic syncing and updates put a timestamp to everything. No more questions about what information is the most recent - from when it was collected to when it was uploaded, your data is automatically reconciled so the best information is at the top. Need to review the timeline? No worries, everything is archived and can be restored at any point.



FROM SALES PROSPECTING TO WORLD-WIDE OPERATIONS, Field Inventory is the tool companies are using to keep their teams up to date and empowered with the latest data. OS and device agnostic and easy to use, your remote workers can quickly and accurately update records and databases with information from anywhere in the world and sync across the entire company. No clerical errors, no downtime, no waiting. There is no arguing it: business moves fast. The question is: will you be the one to set the pace?

